

23rd March 2020

Dear Parents and Carers,

Over the weekend you will have seen messages in the media and social media about only accessing provision in schools as a very last resort. Some of you may have already decided to make alternative arrangements for your children based on the fact that every social contact multiplies the risk for everyone. If you have made new arrangements, thank you and good luck, stay safe and we will see you when this is all over.

If you have no choice but to send your child to us, please read the following to prepare you and your child so that we can run as smoothly and safely as possible. Like you, as frontline workers, we are happy to play our part, but we must minimise risks.

- 1) We are no longer a school, it will look and feel very different. All teaching of the National Curriculum has been suspended.
- 2) Children should only attend for the days and hours that are essential while you carry out your frontline work.
- 3) Our hours will be 9:00am – 3:00pm.
- 4) Children should wait with an adult on Chapel Lane, adhering to the 2m social distancing signs.
- 5) We will confirm your working hours, asking you about shift patterns and timings etc. (Apologies if this sounds harsh, but you must appreciate that we are all putting ourselves and families at risk to provide this service).
- 6) Children will enter through the gate on Chapel Lane on their own and into school via the playground, wash their hands and go to the hall for a register. You will not be allowed through the gates and onto the site.
- 7) Once in school and in their supervised area we will be practising social distance as much as possible. This is much more tricky with little ones but we will have very stringent hygiene measures in place to minimise risk. Please talk to your child as an ongoing conversation about keeping distance where possible. It would be unrealistic to think children won't come into contact and we still want to have as calm and pleasant time as possible. But it will be different so it will help if your children are prepared.
- 8) If your child is unwell, even if symptoms are not linked to COVID-19, we will not allow them in. As we are running on a skeleton staffing model to maintain social distance, we cannot afford for anyone to pick up coughs and colds. Any sickness or diarrhoea will mean a 48 hour absence from the last episode.
- 9) If we have reason to believe your place is not essential, we will reserve the right to refuse entry to the provision.

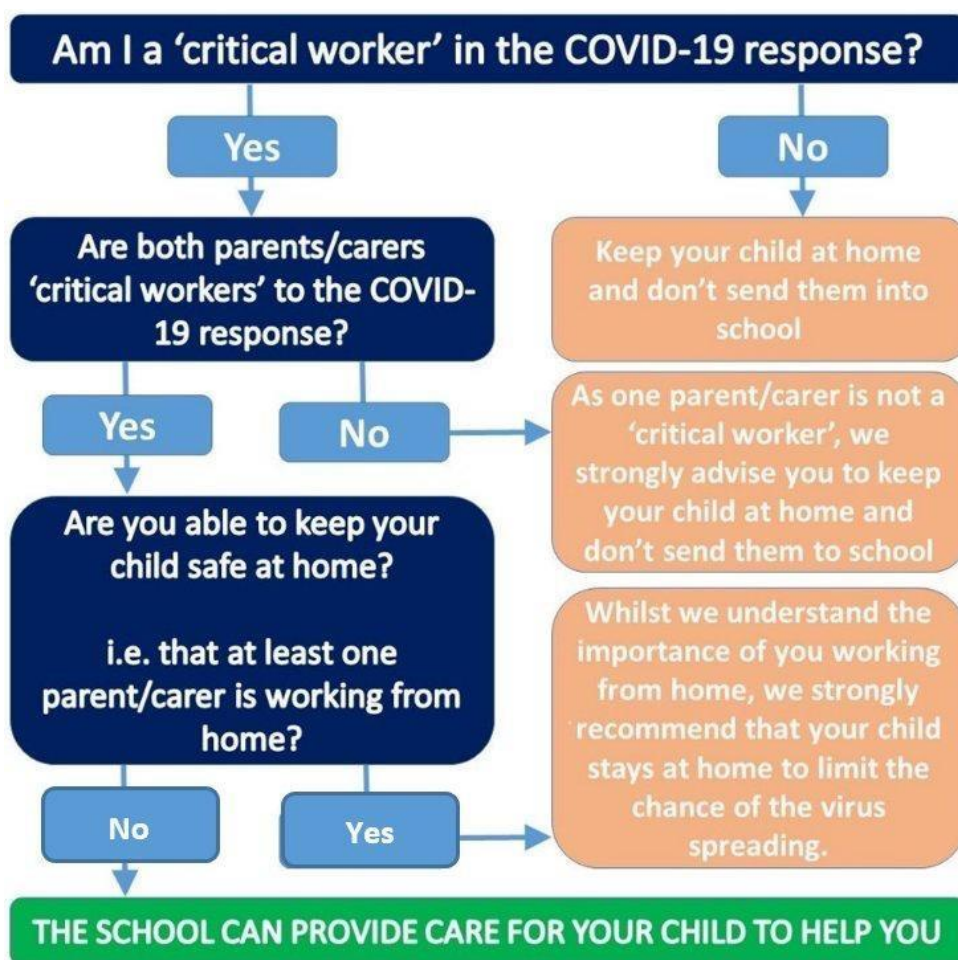
****The information contained within this letter is solely for the intended recipient and you do not have permission to share any of its contents on social media****



Thank you for your frontline work. It means a lot to all of us. These are strange and unusual times and we all need to co-operate with new ways of living and working so that we can beat this awful virus sooner rather than later.

Thank you for your continued support. If you have any questions or concerns please do not hesitate to contact us.

Good luck and stay safe.



****The information contained within this letter is solely for the intended recipient and you do not have permission to share any of its contents on social media****

